

Sang Woon Nam, *Blue Moon 7*, 2023, oil on canvas, 117 x 91cm

Korean Artist Sang Woon Nam Shows his Extraordinary 'Blue Moon' Paintings at Aleph Contemporary

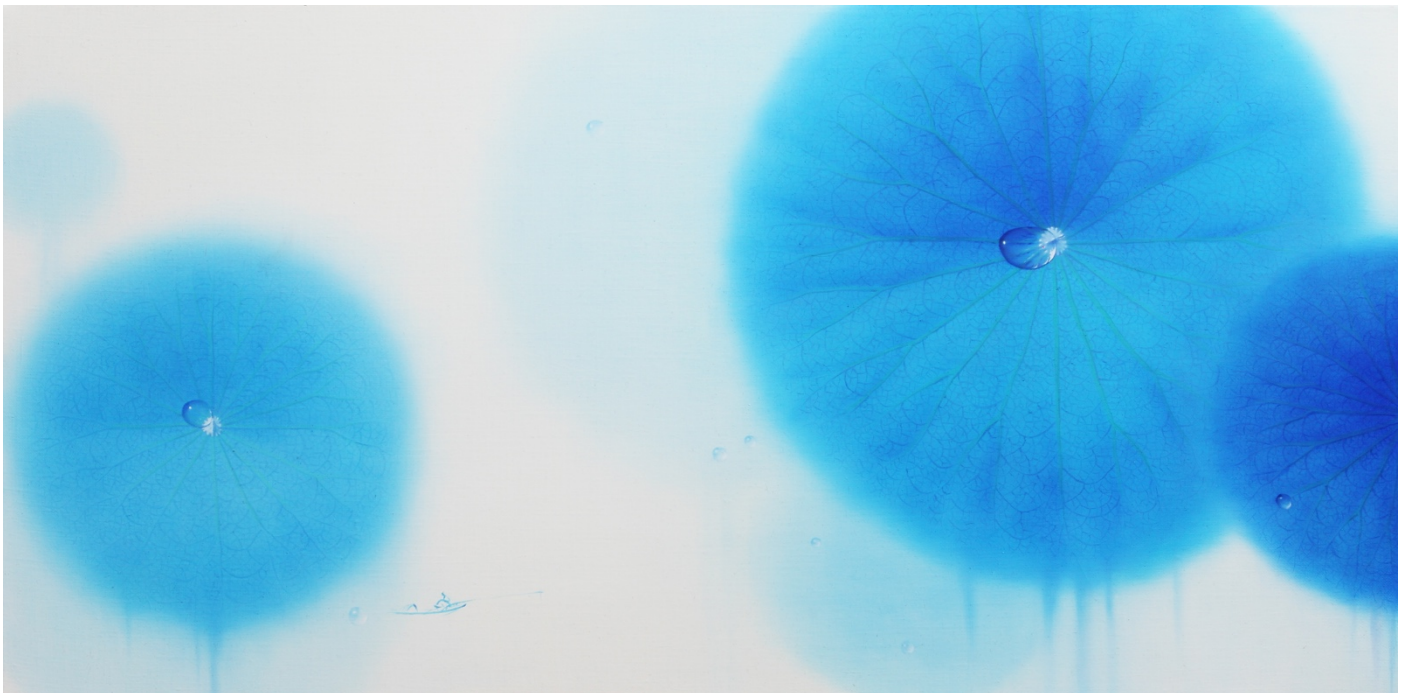
Sang Woon Nam: Blue
Aleph Contemporary, London EC1
4 July – 6 Sept, 2023

As a satellite exhibition of Korean Art London 2023 – which opens for three weeks in July at Mall Galleries, London SW1 – **Blue** offers the opportunity to take a deeper dive into **Sang Woon Nam's** ultramarine lotus leaf paintings.

THE PAINTINGS

Known for his signature colour, which he has dubbed 'Blue Moon', it took Nam fifteen years to develop this intense hue. He was looking for a shade that would express profound mystery and invite the eye to dive into the canvas.

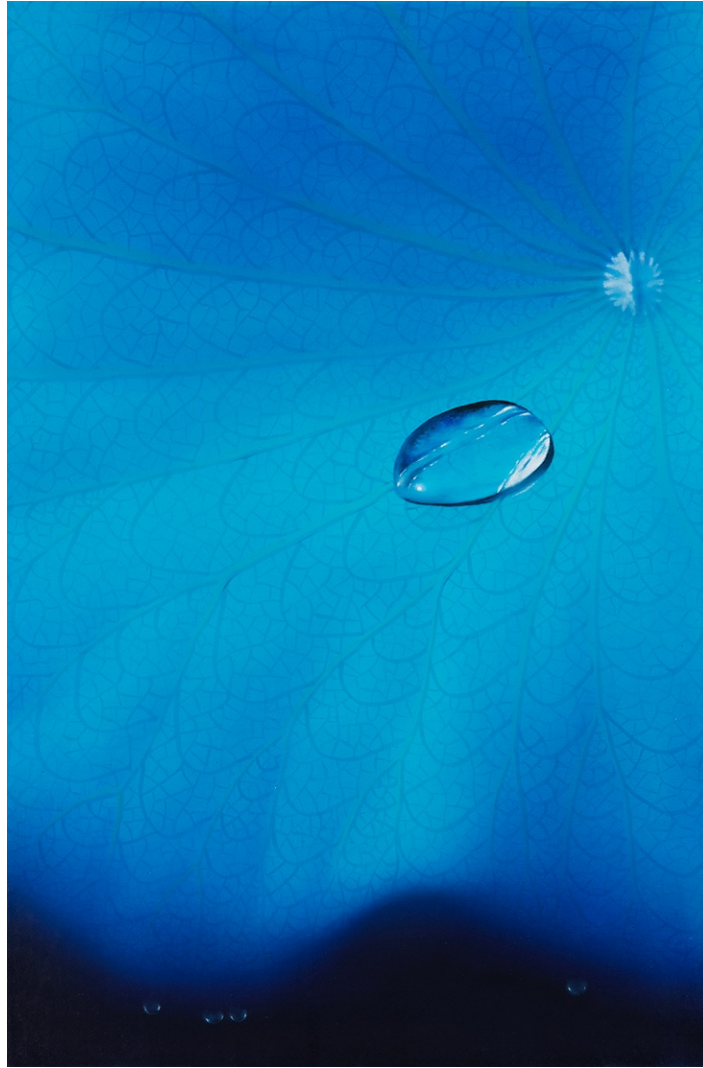
Nam displays a similar dedication to the mastery of technique, as well as to an exceptional level of detail most easily seen in the delicate network of veins that crisscross the lotus leaves' surfaces. Underlining his deep commitment to technical artistry, and to the importance of the artist's hand, Nam equates this fine tracery to the veins that appear on his hands after many hours painting. A work can take up to three years to complete.



Sang Woon Nam, *Blue Moon*, 2019, oil on canvas, 40 x 91 cm

Lotus leaves have long been symbols of purity, creation, and enlightenment. Painting, for Nam, is a devotional act, his patiently acquired skills and his insights etched into the leaves on the canvas. Sometimes the artist adds satirical elements, such as a car the size of a bug, to comment on man's worldly desires.

Nam's work goes beyond mere representation, despite the photorealist style, to touch on more complex themes about the human experience. These serene paintings offer a profound visual experience that induces a state of tranquillity. The paradox being that they can also stir a fundamental sense of unease: the beauty and harmony of the lotus leaf – of life – is fleeting.



Sang Woon Nam, *Blue Moon 20*, 2022, oil on canvas, 41 x 27 cm

SANG WOON NAM, B. 1970

The artist has exhibited widely in South Korea since 1997. In 2022 he had his first show in the UK at J/M Gallery in 2022. He gained a PhD in Fine Arts from Hongik University and an MFA in Painting from Kyonggi University. Awards include the Special Prize at the 14th Danwon Art Festival and the 41st Figurative Exhibition of Gusanggeon.

—ENDS—

Notes to Editors

Sang Woon Nam: Blue - Listings information

Sang Woon Nam: Blue is a satellite show at Aleph Contemporary that will present large-scale paintings, made between 2019 and 2022, from the artist's Blue Moon series. As an expansion of the single Nam painting on display at Korean Art London 6-22 July, Mall Galleries, this exhibition will offer an opportunity for visitors to completely immerse themselves in the artist's work.

Dates: 4 July – 6 September 2023

Aleph Contemporary at The Bindery 53 Hatton Garden, London EC1 8HN

Open Monday – Friday 10am - 5pm (otherwise by appointment)

Enquiries: info@alephcontemporary.com

Tel: +44 (0) 207 692 4045

Vivienne Roberts, Artistic Director: vivienne@alephcontemporary.com

www.alephcontemporary.com

Aleph Contemporary

The Bindery, 53 Hatton Garden, London, EC1 8HN

Aleph Contemporary is a London based roving contemporary art gallery with an international roster of emerging and mid career artists. The name comes from Jorge Luis Borges's strange tale, The Aleph, in which everything in the universe can be seen in a tiny sphere, simultaneously and without distortion or overlapping. It reflects our commitment to the importance of dialogue, invention, and the value of experiencing and understanding art today. Guided by trust, integrity and a commitment to the principle of fair play, both to clients, as well as to artists; our vision is to present new art to a global audience of discerning art collectors. Open Mon-Fri, 10am-5pm (or by appointment).

Korean Art London

KAL is the launch edition of a new Artists Fair held at **Mall Galleries**, London SW1, presenting works in all media from 30+ established and emerging artists from South Korea. Works for sale include painting, mixed media, photography and print, with many of the artists drawing from Korea's rich artistic history to create a fresh visual language. All the artwork is selected and vetted, and the event is curated by an experienced team from Seoul and London. Visitors to KAL will also enjoy South Korean culture: street food and refreshments, plus a programme of events featuring live performance and music, including K-Pop, at the Friday night Art Party. Korean Art London **open: 6-22 July, 2023** www.koreanartlondon.com, info@koreanartlondon.com

Press Contact: Jessica Wood, jessica@koreanartlondon.com Tel: 07939 226988