

LAURENCE NOGA: POETICS OF OBSOLESCENCE

4 May- 6 July 2021

Aleph Contemporary www.alephcontemporary.com



Deep Turquoise Filtered Pink 2019 Acrylic, Wood, Collage 42 x 17cm

“We are invited to consider the power of anachronistic symbols and gestures as creative events, disturbing the routine experience of the present with the intensification of perceptions.”

Dr Kamini Vellodi on Laurence Noga

In his father's garage, artist Laurence Noga discovered a hoard of objects and memorabilia - tools, packets, washers, menus, books, photographs and the like - that his family has collected over the years. He became intrigued by the emotional narratives associated with the objects, the human stories that ran alongside both the practical attributes and aesthetics of each item. No longer in working order, many of these items had become simple design

pieces and mementos to past events. This garage hoard is the source of Noga's latest body of work, a series of assemblages, paintings and mixed-media works to be shown at Aleph Contemporary this spring in an online exhibition entitled 'The Poetics of Obsolescence' accompanied by a text of the same name by Dr Kamini Vellodi, Senior Lecturer in Philosophy, Theory and History of Art, The University of Edinburgh.



wood and enamel. Highly saturated colour is essential to the approach and this is intended to disorientate the viewer, allowing the colour (applied in ordered segments) to create an odd field of depth that calls into question notions of order and disorder.

Noga cites a long term interest in the Bauhaus movement, particularly the works of Moholy-Nagy, Josef Albers and Paul Klee as a key source of inspiration to his work. "The Bauhaus artists drive the unpredictability/predictability of the colour handling. These relationships aim to disorientate the viewer, as surface facture is used translucently, or with a sudden density. The colour is often disbursed, or used in compartments, to create a deliberate, and odd depth of field." He says.

The Poetics of Obsolescence exhibition is curated by Vivienne Roberts, Founder and Artistic Director at Aleph Contemporary who describes her fascination with Noga's work: "Laurence Noga's paintings are highly-coloured objects. Often on wood, they conjure up memories of cubism, notably Fernand Léger and Juan Gris. The scale of these pieces adds a preciousness to their quality so that even a tiny piece has an enormous presence."

Soft Blue Filtered Pink 2020 , 25 x 25 cm Acrylic, wood collage.

Noga's work is a unique combination of geometric painting and systematic assemblage. He intuitively selects and arranges strips of paint and found material into a panoramic format that combines personal visual references with a strong geometric sensibility. The ten multi-layered works in the exhibition immerse the viewer in a universe that the artist describes as "imperfect geometry." He uses a variety of materials, including acrylic, oil, collage, powdered pigment, steel,



Soft Red Filtered Lemon 2020 60 x 182 cm Acrylic and Canvas on Canvas

NOTES TO EDITORS:**Laurence Noga**

Laurence Noga is a graduate of Wimbledon College of Art (BA Hons. Fine Art 1984) and he completed a Post Graduate Diploma in Fine Art at Byam Shaw /Central St. Martins College of Art in 1991, receiving the Post Graduate Award of Merit for Fine Art. He is an artist curator and writer. He was shortlisted for the John Moores Painting Prize in 2018 and has exhibited extensively in group and solo shows across the UK and in Holland. His work is regularly shown at art fairs such as Sluice and the London Art Fair. Noga lectures for the University of the Arts London (UAL) at Camberwell College of Arts and regularly gives talks at Camberwell and at Wimbledon College of Arts. He belongs to the APT community of artists in South London.

Aleph Contemporary

Aleph Contemporary is a London based contemporary art gallery with an international roster of emerging and mid career artists and a forward-looking programme of curated collections, publications, virtual exhibitions and pop-up events. The name Aleph is inspired by Jorge Luis Borges' story of the same name and expresses a commitment to the importance of dialogue, invention, and the value of experiencing and understanding art today.

Press Contacts:

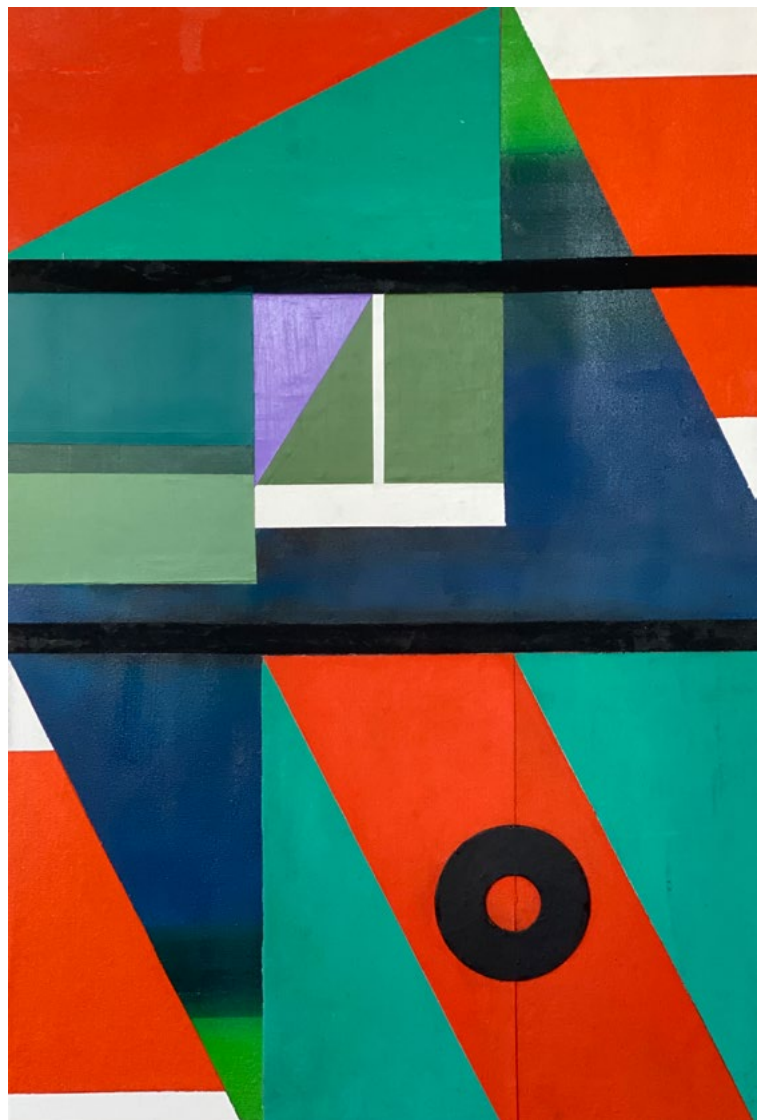
Jessica Wood, Arts Media Contacts

Jessica@artsmediacontacts.co.uk

Tel: 07939 226988

Bianca Antonelli, Aleph Contemporary

gallery@alephcontemporary.com



Double Orange Filtered Black 2021 Acrylic and Collage canvas, 91 x 60 cm



Soft Red Filtered Grey 2017 40 x 200cm Acrylic and Collage on Canvas